

# SierraSol

BLACKOUT FABRIC

EXCLUSIVELY FROM **RollEase**®

## VISTA

### FEATURES AND BENEFITS

#### UNIQUE DESIGN

*Jacquard weave and subtle color contrast offers differentiated styling to complement any interior décor*

#### COLOR AVAILABILITY

*Available in 6 beautifully textured colors to create an exceptional range of design possibilities*

#### WHITE BACKING

*Provides a uniform color to the exterior, increasing visual appeal*

#### ACRYLIC FOAM COATING

*Blackout has bounce back quality for better tracking on roll*

#### LIFETIME LIMITED WARRANTY

*SierraSol is manufactured for enhanced sustainability from the best available resources*

#### VERSATILE

*Can be used on roller shades, Roman shades, or panel tracks*

#### ENERGY SAVINGS & COMFORT

*Reduces solar heat gain and glare resulting in increased energy savings and comfort*

#### CUT YARDAGE

*Conveniently order cut yardage (3 yard min.) in all colors and roll widths to make smaller jobs cost-effective*



*Vista shown above in Dune color*

Vista is a beautifully woven collection of blackout fabrics with an intricate pattern to complement any interior décor. Vista is made from 100% polyester with an acrylic coating and is PVC-free.

Available in 6 beautifully textured colors, Vista can add a fresh new look to generate a wide range of design possibilities using roller shades, Roman shades, or panel tracks. Vista features a white backing to create a uniform appearance from the exterior.



## COLORS



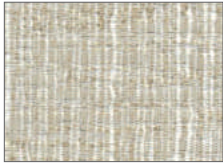
SURF



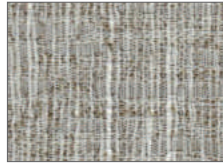
PUMICE



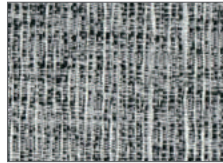
SAND



PAPERBARK



DUNE



DRIFTWOOD



Vista shown above in Surf color

## SPECIFICATIONS

**COMPOSITION** 100% POLYESTER WITH ACRYLIC FOAM BACKING

**STANDARD ROLL WIDTH** 110" (2.8 M)

**AVERAGE ROLL LENGTH** 33 YD (30 M)

**OPENNESS FACTOR** 0% BLACKOUT

**WEIGHT** 11.14 OZ/YD<sup>2</sup> (378 G/M<sup>2</sup>) +/- 5%

**THICKNESS** 0.020" (0.53 MM) +/- 5%

**YARN COUNT** WARP/61 WEFT/20 (ENDS/IN)

**COLORFASTNESS TO LIGHT** GRADE 6-7 ISO-105-B02

**TENSILE STRENGTH** WARP 207, WEFT 200 daN/5CM

**TEARING STRENGTH** WARP 9.2, WEFT 14.1 daN

**ENVIRONMENTAL** PVC-FREE • LEAD-FREE

**ENHANCED PROTECTION** MOLD AND MILDEW INHIBITOR

**WARRANTY** LIFETIME LIMITED

**CLEANING** WIPE CLEAN WITH WARM SOAPY WATER & DAMP CLOTH

## FENESTRATION PROPERTIES

**OPENNESS FACTOR** 0%

**UV BLOCKAGE** 100%

SHADING COEFFICIENT (SC) HEAT GAIN (G-Value)

Style	Color	Ts	Rs	As	Tv	1/8"CL	1/4"CL	1/4"H.A.	1/8"CL	1/4"CL	1/4"H.A.
Vista	White*	0	72	28	0	0.25	0.26	0.28	0.22	0.23	0.24

\*Similar fenestration data achieved for all other colors.

Ts = Solar Transmittance

1/8"CL = 1/8" Clear Glass

Rs = Solar Reflectance

1/4"CL = 1/4" Clear Glass

As = Solar Absorption

1/4"H.A. = 1/4" Heat Absorbing Glass

Tv = Visual Transmittance

FABRICATION METHODS: CUTTING; COLD, ULTRASONIC, CRUSH, OR LASER. SEAMING; THERMAL, HIGH FREQUENCY, ULTRASONIC, OR SEWING. RAILROADING (TURNING WIDTH FOR LENGTH) IS NOT RECOMMENDED.

THIS FABRIC IS SUITABLE FOR ROLLER SHADES, ROMAN SHADES, AND PANEL TRACKS. INTERIOR USE ONLY.

FOR SWATCH SAMPLES, CONTACT ROLLEASE CUSTOMER SERVICE 800-552-5100, FAX 203-358-5865, sales@rollease.com

COLORS MAY VARY FROM SWATCH SAMPLES. ALL VARIATIONS ARE WITHIN INDUSTRY STANDARDS. PLEASE CHECK THE COLOR BEFORE CUTTING.

**RollEase Headquarters**  
200 Harvard Avenue  
Stamford, CT 06902  
Phone: 203-964-1573 • 800-552-5100  
Order Fax: 203-358-5865

**RollEase West**  
7310 West Roosevelt Street, Ste. 26  
Phoenix, AZ 85043  
Phone: 623-936-5818  
Order Fax: 623-936-5294